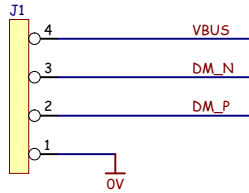
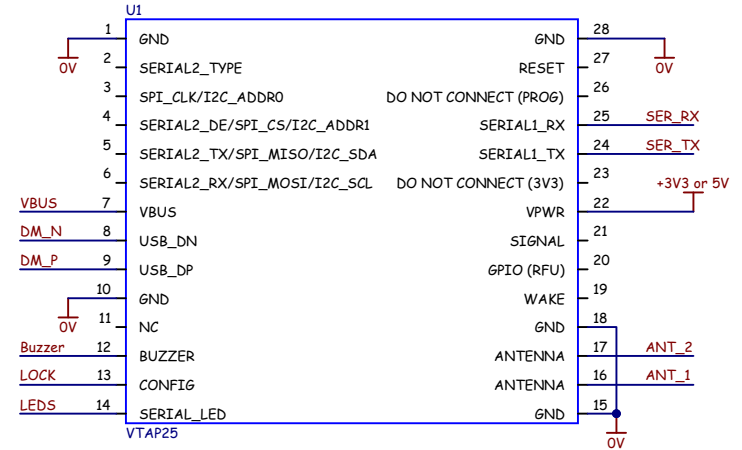


It is recommended that some form of USB access is implemented even if this is not required functionality to allow debug and simplified production configuration.

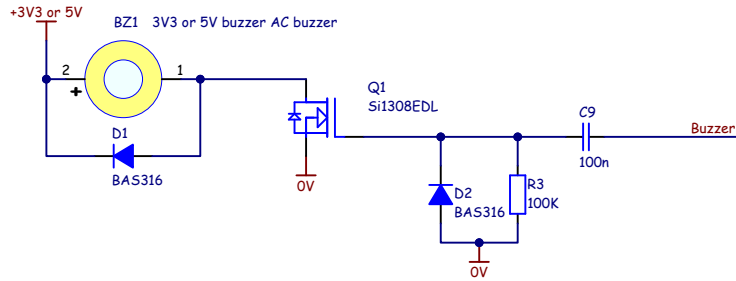


Simple USB Connection

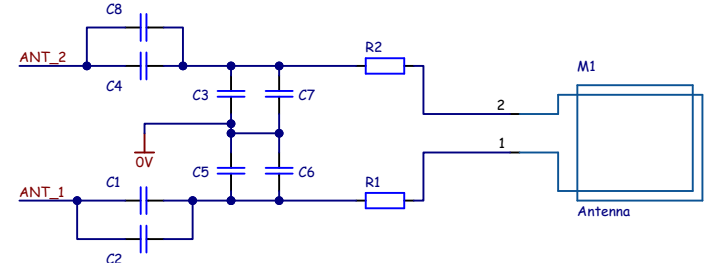
RESET does not need to be connected unless external reset control is required as part of user function



VTAP25 Module



Buzzer Circuit



Antenna with Matching Circuit

Title: VTAP25 Host Powered Example (Second Draft)

Variant: [No Variations] -

Assembly Revision:

© COPYRIGHT

This drawing has copyright and may not be copied in whole or in part or used for any purpose other than that for which it is supplied without express written consent.

DOT ORIGIN Ltd
Unit 7, Coopers Place, Combe Lane
Wormley, Godalming
Surrey, GU8 5SZ, UK
Tel: +44 (0)1428 685 861
Email: vtap-support@dotorigin.com

A4

DRAWING NO

[No Variations]-Scm

Sheet 1

Of 1

REV

2

ECN

N/A

DATE

12Feb2025

Drawn

Dot Origin Ltd